

# Companies' Synopsis

## **Aljumah Group**

**Saudi Arabia**

**Sudan**

*Eng. Nasser Fahed Aljumah*

*Aljumah@aljumah.com*

We own more than 22 companies, 90% of which is located in Sudan. The rest is located in both Saudi Arabia and UAE.

## **BANKING SECTOR**

### **1. Commercial Real Estate Bank.**

We own it 100%. This bank used to be a governmental non-profit bank dealing with only real estate. Upon acquiring it in early 2003, we added the commercial function to it. The bank's headquarter as



well as the main branch are both located in the capital city of Sudan (Khartoum). We studied the bank fundamentals and did a complete economic study which resulted in revamping the bank organizational management, activities, and number of branches. One of the main activities that have been recently initiated is the real estate bursa.

### **2. Islamic Cooperative Development Bank**

We own more than 40% while the rest belongs to other shareholders. This bank

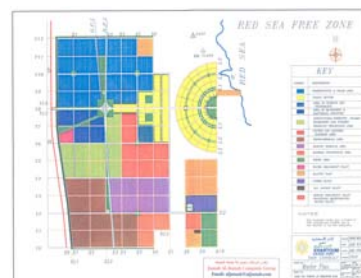


commenced working in mid 1983. The bank headquarter is located in Khartoum. Moreover, this bank has about 30 branches all over Sudan and more than 560 employees.

## **DUTY FREE ZONE SECTOR**

### **1. The Sudanese Free Zones & Market Co.**

We own 54% while 30% is owned by the Sudanese government and the rest is owned by other shareholders. This company owns 3 duty free zones:



- A 60 km x 10 km (600 km<sup>2</sup>) area located on the Red sea from Sudan Side (Port Sudan). While more than 50 commercial, industrial, and financial entities are already enjoying a portion of this area, a large segment is proposed for a sea port to serve the entire African continent.
- A 26 km<sup>2</sup> duty free zone in Khartoum.



- Sudan International exhibition Halls. It covers an area of about 44500 m<sup>2</sup> comprises 5 main halls. Each hall covers 8000 m<sup>2</sup>.



### **CONSTRUCTION SECTOR**

1. **DON FODIO Construction Company.**
2. This body is equipped to carry major infra structure developments, i.e., dams, bridges, highways, and high rise buildings. Our share is 50% while the other half is for the Sudanese government.



### **TRANSPORTATION SECTOR**

1. **Aljumah and Aborsi for Transportation.** We own more than 130 heavy and light duty trucks and buses.
2. **Railroad and trains.**

3. **A Vessel** for exporting merchandise and commodities. Owned by us but being leased to an independent operator.



### **AVIATION SECTOR**

1. We own three Boing 737 operational from Sharjah and Dubai in the UAE.



## TOURISM SECTOR

1. **The Nile Palace Hotel.** This eleven story 5 star hotel lies on an area of 81000 m<sup>2</sup> on the Blue Nile River in the capital city of Khartoum.
2. **The Green Village Resort** in Khartoum. This resort contains more than 100 separate rooms located conveniently located on the blue Nile River within proximity of the city.
3. **Restaurants** for not only dining but also for preparing official ceremonies.
4. **Aljumah Limousine.** A fleet of more than 80 cars, 20% of which are for VIP services providing top of the line treatment using luxurious vehicles.
5. **Ala'araf company.** This company is for development of amusement parks.



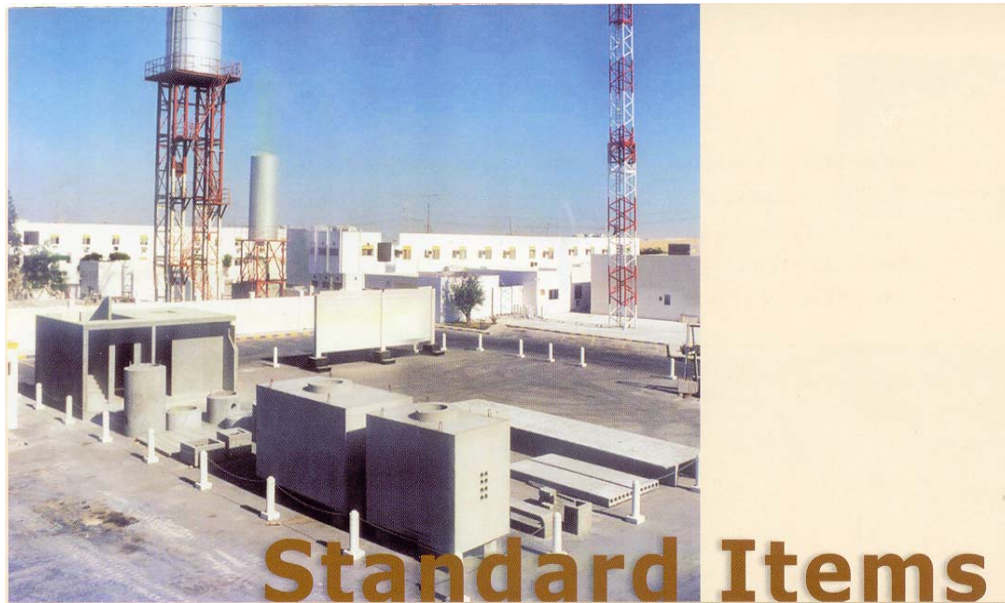
## OIL AND GAS SECTOR

1. **Aljumah and Aborsi for Petroleum Product Marketing.** Among its activities, this company is for LPG and Gasoline distribution. It is considered one of the top Three companies in Sudan in this line of business. Its market share exceeds 40%.

## MANUFACTURING SECTOR

1. A **factory** for manufacturing cooking ovens of different sizes.

## 2. **Precast Factory & ready Mix Concrete** in Saudi Arabia.



### **IT SECTOR**

Our IT companies have the exclusive rights to provide the Sudanese government with their IT needs and networking.

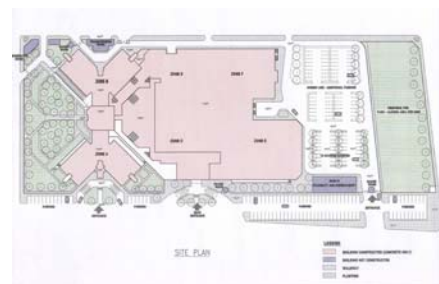
1. **KITCE.** This company provides IT solutions and Networking.
2. **SEDIC** Company. A **GIS** technology Activities

### **AGRICULTURAL SECTOR**

1. **Aljumah and Aborsi** for agriculture and animals.

### **MEDICAL SECTOR**

1. A **hospital** with 300 beds in capacity located in the Eastern Province in Saudi Arabia. Still under construction.



## REAL ESTATE SECTOR

### 1. The Nile Palace high rise projects.

Four high rise building (23 stories each) as well as a shopping mall. The Nile Palace is one of the latest Real estate Investment Project on the entire Sudan, which can offer you the highest quality for living comfort through its three Residential Towers and Apartments. Your Business will come alive with its classiest offices and Indulge with grandest shopping centers, restaurants and top recreational and service facilities in an environment rich and affluent with its natural components ranging from between attractive water sites, charming greenery interacting with one picture of harmony, privacy and excellence.



2. A big number of **real estates** all over Sudan.

***END***